

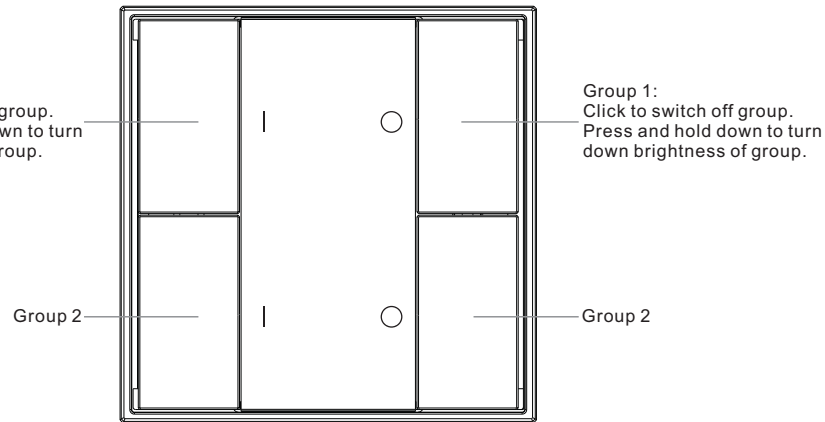
Push Button DT6 DALI Group Controller

70030129

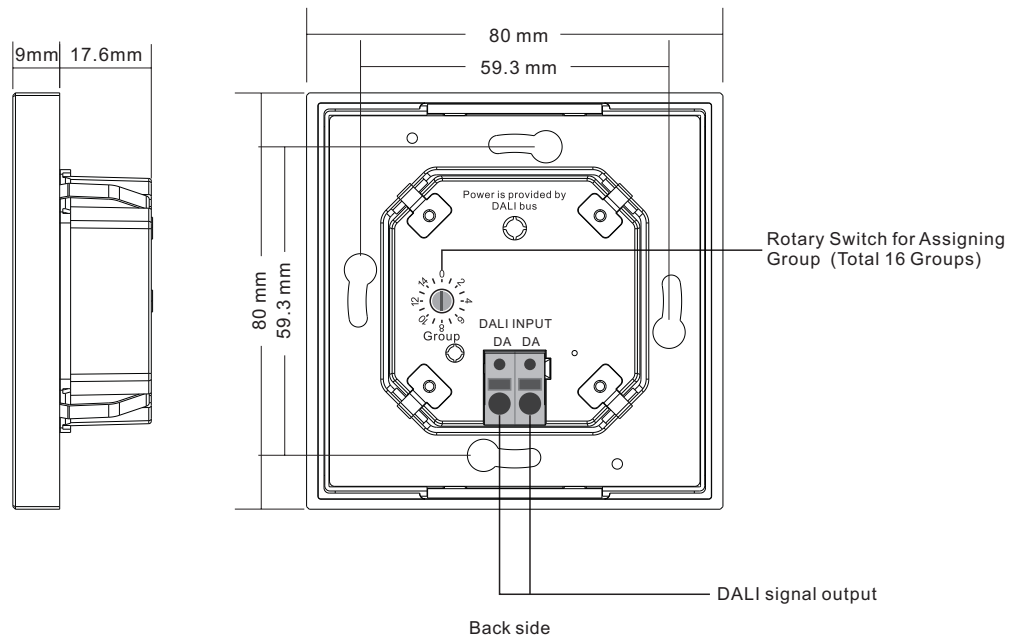


Important: Read All Instructions Prior to Installation

Function introduction



Front side



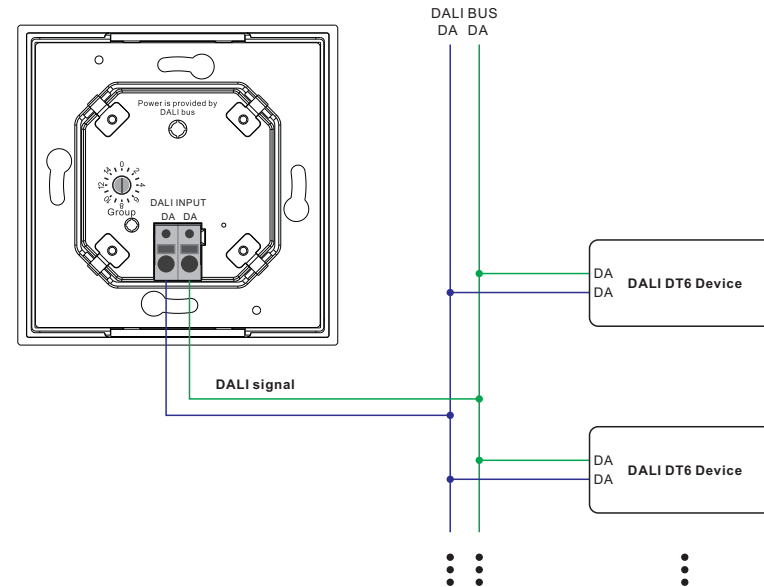
Back side

Product Data

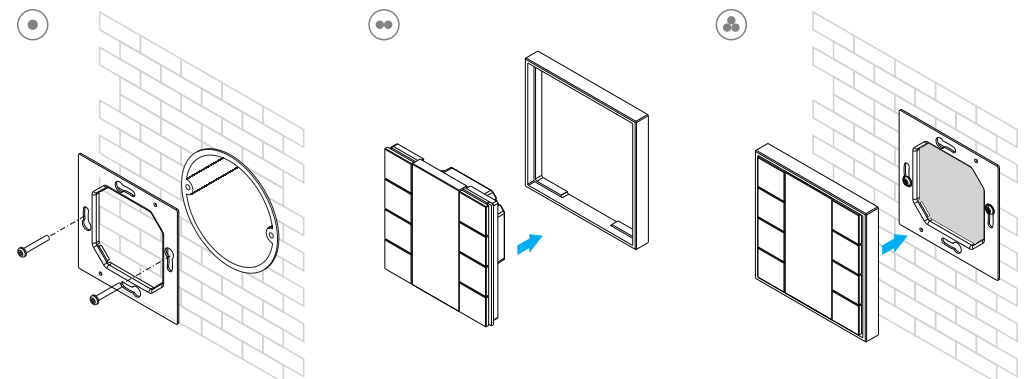
Output	DALI signal
Power Supply	Supply By DALI Bus
Operation Current	30mA
Operating temperature	0-40°C
Relative humidity	8% to 80%
Dimensions	80x80x26.6mm

- DALI DT6 push button controller
- Ultra slim and luxury design
- Material and finishing color can be customized
- With back lighting design, easy to find even in dark night
- DALI bus powered, no extra power supply required
- Each channel DALI bus can install multiple controllers
- Enables to select and control 2 DALI groups from total 16 DALI groups
- Easy installation with mounting bracket
- Waterproof grade: IP20

Wiring Diagram



Installation



Safety & Warnings

- DO NOT installed with power applied to device.
- DO NOT expose the device to moisture.

Operation

1. Set starting Group number via rotary switch on the back: (0-15 selectable)

• This DALI touch panel controller enables dimming commands to be sent to 2 Groups of devices on the DALI circuit. A rotary switch on the back is used to select Groups you would like to control and set the starting Group number, and total 16 Groups (0-15) can be selected.

• When the rotary switch arrow position is at 0, group 1 buttons control all DALI devices on the circuit via broadcast, group 2 buttons control DALI Group 0.

• When the rotary switch arrow position is at X except 0 (1-14), group 1 controls DALI Group X-1, group 2 controls Group X.

• When the rotary switch arrow position is at 15, group 1 controls devices in DALI Group 14, group 2 controls all devices through broadcast.

Note: all DALI slaves on the circuit shall be assigned to one or more DALI groups by DALI master first.
Please refer to the detailed Group setting table as follows:

Rotary Switch Position	0	1	2	3	4	5	6	7	8	9	10	11	12	13	14	15
DALI Group for Group 1 Buttons	Broadcast	0	1	2	3	4	5	6	7	8	9	10	11	12	13	14
DALI Group for Group 2 Buttons	0	1	2	3	4	5	6	7	8	9	10	11	12	13	14	Broadcast