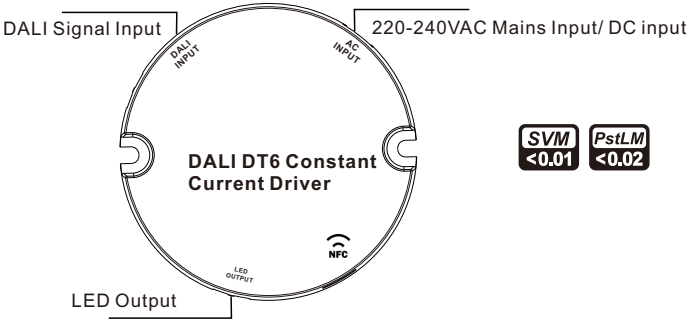


15W DALI DT6 NFC Round LED Driver(Constant Current)



Important: Read All Instructions Prior to Installation

Function introduction



Product Data

Output	LED Channel	1
	DC Voltage	10-42V, Max.48V
	Current	200-700mA via NFC tool; Min.current gear lower to 0.1mA, default 350mA
	Current Accuracy	±3%( ±1%@Certain full load) @ full load
	Rated Power	Max. 15W
Input	Voltage Range	220-240VAC/220-240VDC
	Absolute Voltage Range	198-264VAC/198-264VDC
	Frequency Range	0/50/60Hz
	Power Factor (Typ.)	> 0.945 @ 230VAC Full load*
	Total Harmonic Distortion	THD ≤ 15% (@ full load / 230VAC)*
	Efficiency (Typ.)	> 79% @ 230VAC full load*
	AC Current (Typ.)	0.1A Max.
	Inrush Current (Typ.)	Max. 4.66A at 230VAC; 72µs duration
	Leakage Current	< 5mA /230VAC
	Standby Power Consumption	< 0.5W
Control	Anti Surge	L-N:2KV
	Dimming Interface	DALI Device Type 6 (DALI consumption < 2mA)/ AC Push
	Dimming Range	0.01%-100%@ Max current
	Dimming Method	Amplitude/CCR dimming
	Dimming Curve	Linear/ Logarithmic optional

Protection	Short Circuit	Yes, recovers automatically after fault condition is removed
	Over Current	Yes, recovers automatically after fault condition is removed
	Over Temperature	Yes, recovers automatically after temperature drop
Environment	Working Temp.	-25°C ~ +60°C
	Max. Case Temp.	Tc=90°C
	Working Humidity	10% ~ 95% RH non-condensing
	Storage Temp. & Humidity	-40°C ~ +80°C, 10% ~ 95% RH
Safety & EMC	Safety Standards	EN61347-1, EN61347-2-13, GB/T 19510.1-2023, GB/T 19510.213-2023
	Withstand Voltage	I/P-O/P: 3.75KVAC
	Isolation Resistance	I/P-O/P: 100M Ohms / 500VDC / 25°C / 70% RH
	EMC Emission	EN55015, EN61000-3-2, EN61000-3-3, GB 17625.1-2022, GB/T 17743-2021
	EMC Immunity	EN61547, EN61000-4-2,3,4,5,6,8,11
Others	MTBF	191350H, MIL-HDBK-217F @ 230VAC full load and 25°C ambient temperature
	Dimension	φ57x24mm (D*H)
	Warranty	5 Years

- \*: PF/THD/Eff shall be different per different testing setup and equipment.
- In compliance with IEC 62386-101:2014, IEC 62386-102:2014, IEC 62386-207 Ed2
  - Built-in DALI-2 interface, DALI DT6 device
  - Dimmable LED driver. Max. output power 15W
  - 200-700mA current selectable via NFC program tool. Min.current gear lower to 0.1mA
  - DALI Address/Group/Scene setting via NFC program tool.
  - Class II power supply, full isolated plastic case
  - High power factor and efficiency
  - ON/OFF and Dimming control
  - Amplitude/CCR dimming, smooth and deep dimming
  - Compatible with universal DALI masters that support DT6 commands
  - CLO function for a further upgraded experience
  - CD(Corridor Mode): auto light on when someone enters
  - DALI-251/252/253 Enabled,DALI data inside
  - IP20 rating, suitable for indoor LED lighting applications
  - 5 years warranty

Safety & Warnings

- DO NOT install with power applied to the device.
- DO NOT expose the device to moisture.

Operation

With DALI master

**1. DALI Address**  
1 DALI address for 1 channel output are assigned by DALI Master controller automatically, please refer to user manuals of compatible DALI Masters for specific operations.

With NFC Programming devices

#### Note

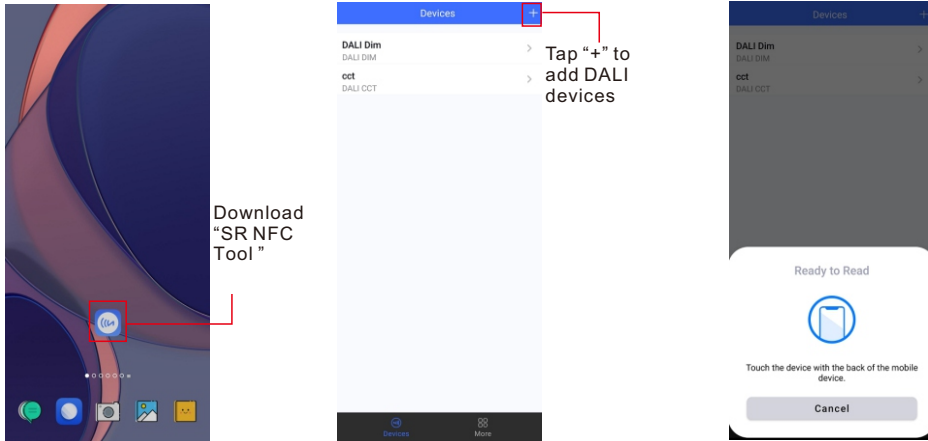
1) Do wiring according to the wiring diagram and power on the DALI system .

2) Recommend setting parameters without power-on the DALI devices .

2) Please make sure your mobile phone has NFC function and enable it .

#### Working with “SR NFC Tool” APP

Step 1: Download the APP (searching “SR NFC Tool” from App Store and Google Play) .  
Then open the APP .



**Note:** 1. Please Make sure that you have enabled NFC function with your mobile phone/ tablet .  
2. Please Make sure that the “NFC position” is matched.  
3. Please do not power on the device before setting.  
4. If you can't download “SR NFC Tool”. Please contact with us.

Step 2: Add device, and name it as you wish.



Step 3: Unlock device, enter parameters configuring page.



**Note:** 1. You have to unlock the device then do some settings  
2. Only when the corresponding function is selected, the function interface will be displayed.

Step 4: Few parameter interface, you can choose the setting based on your requirements.



Step 5: After setting, please save the selected configuration via NFC and power on the device.



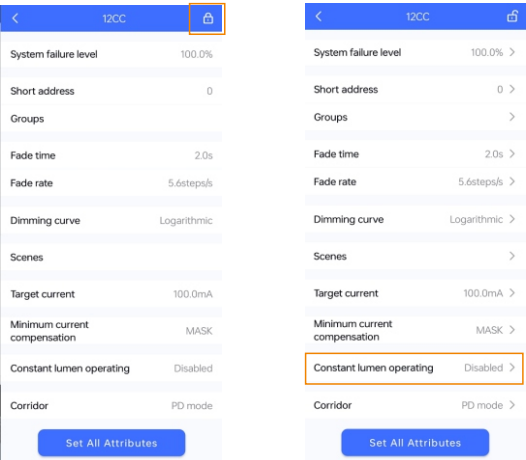
Tips

- 1. NFC function doesn't require any power driver.
- 2. Many functions can be configured by NFC. Kindly check your desired functions.
- 3. All of our DALI drivers are in the best performance within our DALI master/ DALI IoT gateway.

Note: Within Our NFC tech design, you shall probably have one of the largest NFC sensing area. The More sensitive you're able to touch, the more convenient you can have.

CLO AND CORRIDOR DIM(CD) FUNCTION INSTRUCTION

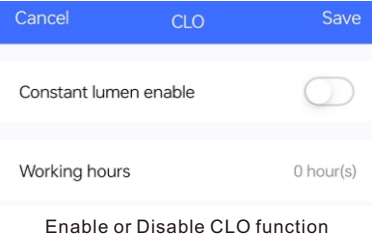
1.Open APP, and Find the CLO/CD functions



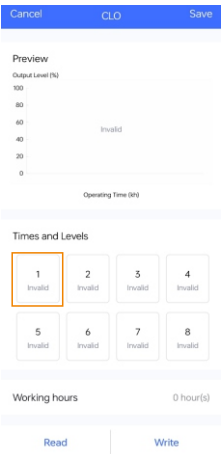
Read From the NFC Driver



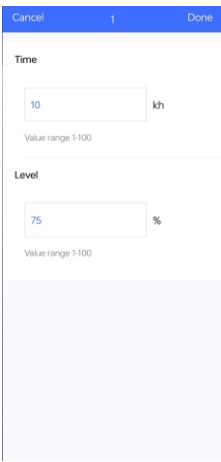
Unlock it,and Click here to enter CLO settings



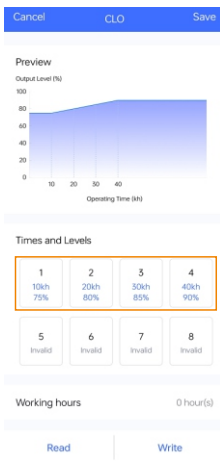
2.Enter CLO Setting homepage



Enable CLO function



Click "1",and set its time and level



Set your desired time and levels.  
Graphic display

Tips:

Working hours : Ability to calculate the working hours of a single driver.

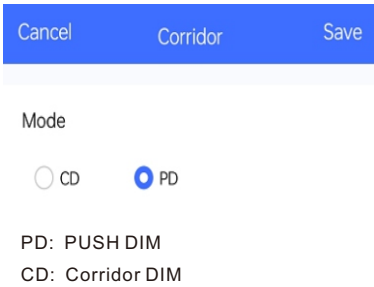
3.Corridor dim(CD) function



Read From the NFC Driver



Unlock it,and Click here to enter Corridor mode



4.Enter CD Setting homepage

CancelCorridorSave

Mode

☒ CD☐ PD

Preview

Level (%)

100  
80  
60  
40  
20  
0

Fade inOccupiedFade outProlongedDim to off

Fade in time

5s

Value range 0-100

Occupied time

ReadWrite

CancelCorridorSave

Occupied time

120s

Value range 0-60,000

Occupied level

100%

Value range 0-100

Fade out time

5s

Value range 0-100

Prolonged time

ReadWrite

CancelCorridorSave

Prolonged time

60s

Value range 0-60,000

☐ Infinite

Prolonged level

20%

Value range 0-100

Dim to off time

5s

Value range 0-100

ReadWrite

Enter CD mode

Tips:

- 1. You should select either CD mode or PD mode, but not both.
- 2. Under CD mode, you can realize it with normal (3rd party) AC sensor.
- 3. Default mode: PD mode.

Additional Remarks

More

Write Consecutively

☐

Advanced

>

App Version

1.0.10

Check for Update

>

Privacy Policy

>

ConfigurationsMore

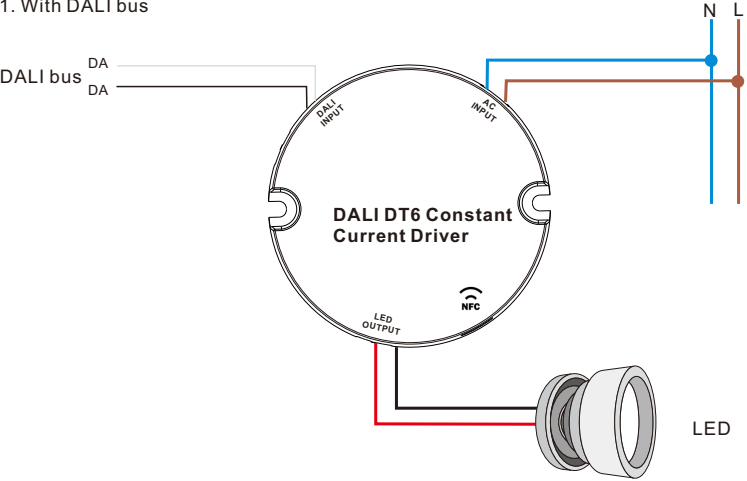
- 1. Please make sure your APP version is 1.0.10 or higher.
- 2. Please make sure NFC driver's firmware is available with CLO / CD functions.

Wiring Diagram

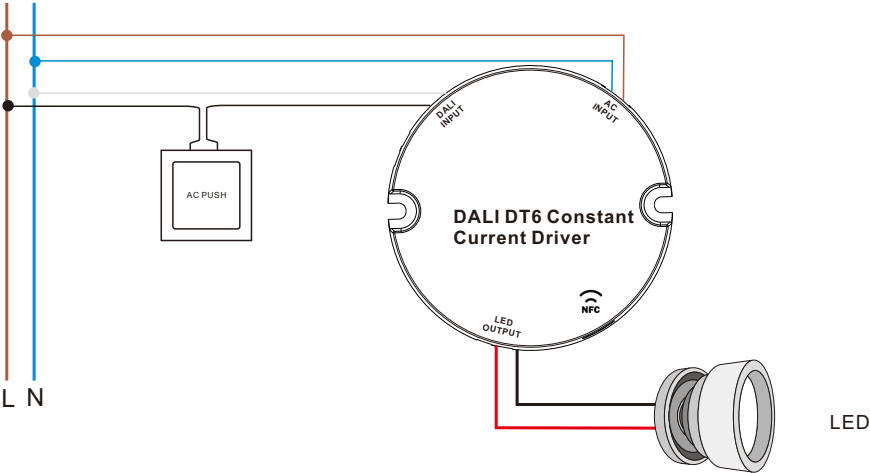
Notes: Wire length may vary ±2–3 mm due to manufacturing and manual measurement variations.

Function	Color	Wire Gauge	Wire Length	Tinned Length
ACL/DC+	Brown	28 AWG	113 mm	9-10 mm
ACN/DC-	Blue	28 AWG	113 mm	9-10 mm
LED+	Red	20 AWG	130 mm	7-8 mm
LED-	Black	20 AWG	130 mm	7-8 mm
DA	Black	20 AWG	122 mm	7-8 mm
DA	White	20 AWG	122 mm	7-8 mm

1. With DALI bus



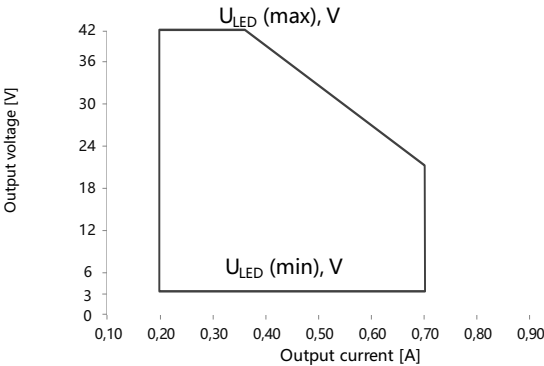
2. With PUSH dimmer



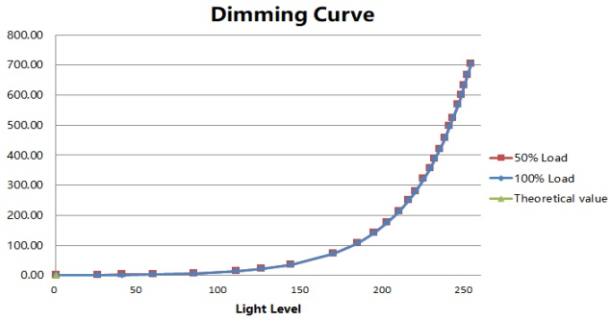
AC Push Function

- 1) Click the button to switch ON/OFF
- 2) Press and hold down the button to increase or decrease light intensity to desired level and release it, then repeat the operation to adjust light intensity to opposite direction. The dimming range is from 1% to 100%.

Operating window

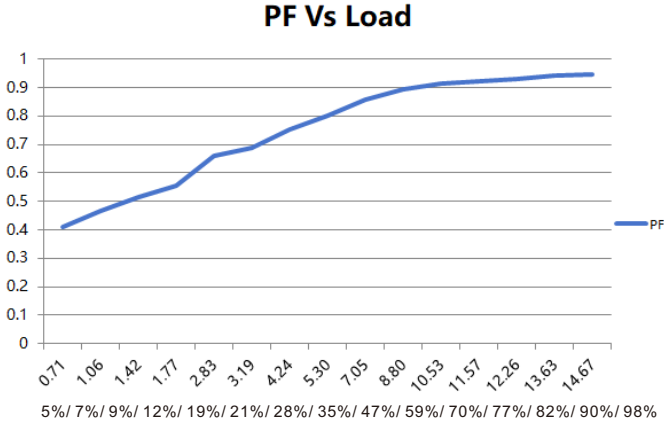


Dimming Curve



Note: Test data under 700mA gear

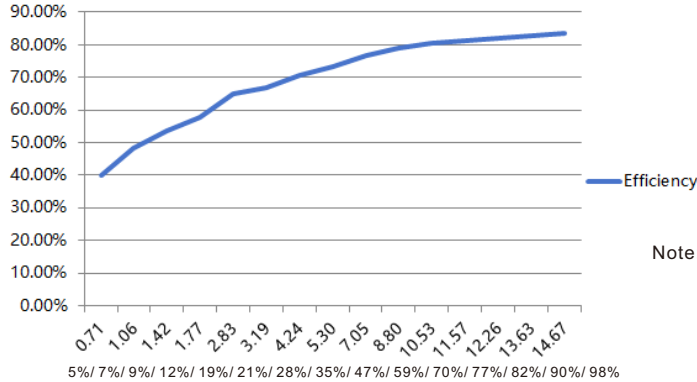
Driver Performance



Note: Test data under 350mA gear

Driver Performance

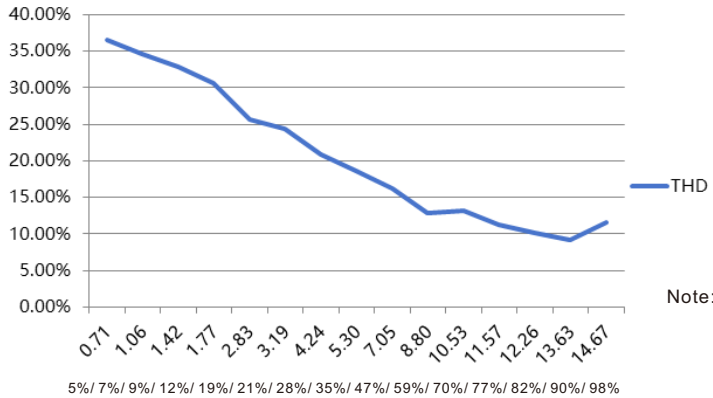
Efficiency Vs Load



Note: Test data under 350mA gear

Driver Performance

THD Vs Load



Note: Test data under 350mA gear

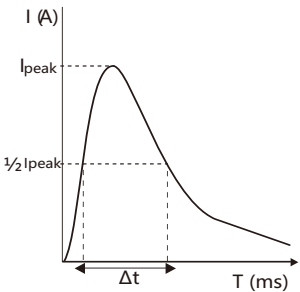
Expected Lifetime

Module Number	Output current	Ta	30 °C	40 °C	45 °C	•••	60 °C
SRPY-2305N-15CC200-700	200 – 700 mA	Tc	50 °C	60 °C	70 °C	•••	90 °C
SRPY-2309N-15CCT200-700	200 – 700 mA	Lifetime	> 100,000 h	> 80,000 h	> 60,000 h		> 40,000 h

The LED driver is designed for a lifetime stated above under reference conditions .  
The relation of tc to ta temperature depends also on the luminaire design.

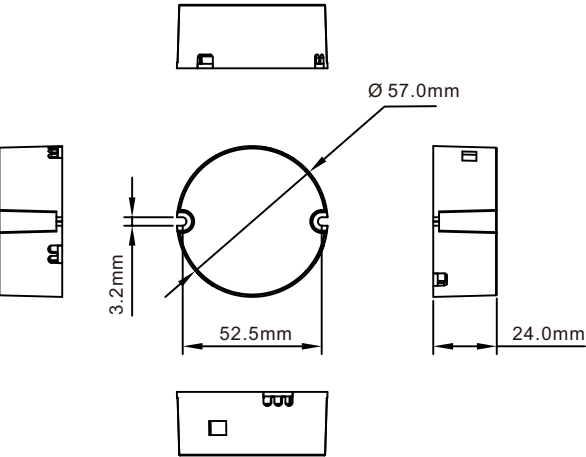
MCB Load Quantity

Module Number	Ipeak	Twidth	Max.quantity of LED Driver per MCB														
			B10	B13	B16	B20	B25	C10	C13	C16	C20	C25	D10	D13	D16	D20	D25
SRPY-2305N-15CC200-700	4.66A	72μs	60	78	96	120	150	70	91	112	140	175	80	104	128	160	200
SRPY-2309N-15CCT200-700	4.66A	72μs	60	78	96	120	150	70	91	112	140	175	80	104	128	160	200



- Note:
- 1.Those MCB parameters are based on ABB S200 series circuit breakers.
  - 2.For different brands and models of miniature circuit breakers, the quantity of drivers will have difference.
  - 3.Please do not exceed the above-mentioned quantity during on-site installation, and the specific load quantity shall be subject to on-site installation.
  - 4.When the installation environment temperature of MCBs exceeds 30°C or when multiple MCBs are installed side by side, the number of mounted drives will be reduced, which requires recalculation.
  - 5.Type C MCB's are strongly recommended to use with LED lighting

Product Dimension



Packaging

1 PCS/Box	51 PCS/Carton
86x86x45mm	380x270x280mm

Update log

Date	Version	Update content	Update by
2023-10-30	V1.3	Parameter Update....	Romeo

Note: Subject to change without notice. Please contact us if you have any questions.